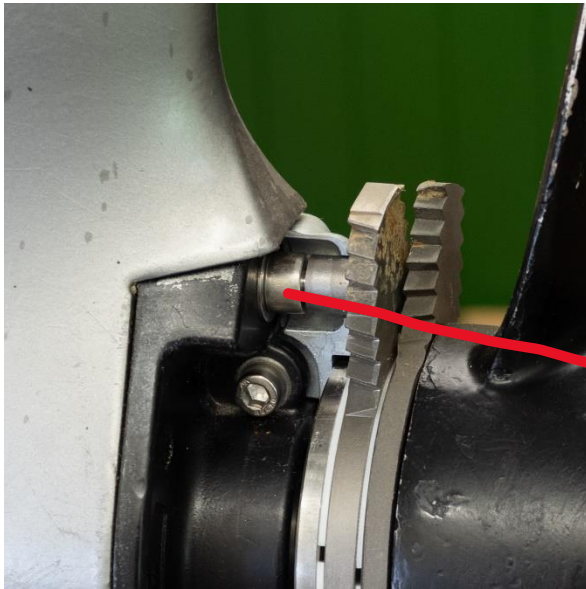




Fixed Cutter is retained in the upper bearing housing bolt.

On post 2019 drives, swap out the existing bolt for the ones supplied.

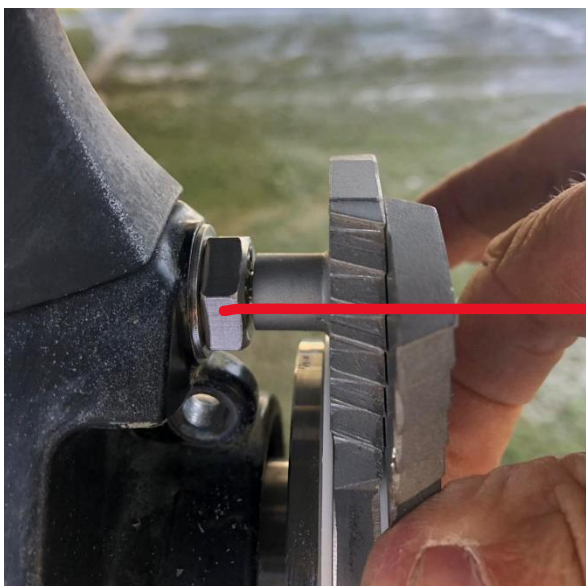
On pre 2019 drives this is an 8mm socket head cap screw and needs no alteration



Volvo 130 Variant D Post 2019

Originally fitted with 8mm Socket Head Bolt

Swap out for Special 8mm Socket Head (supplied) and washer as shown



Volvo 150 Variant D Post 2019

Originally fitted with 10mm Hex Head Bolt

Swap out for special 10mm Hex head (supplied) and washer as shown